

# NLE Review Packet

## Familia Romana

Latin

English

Pater	
Mater	
Soror	
Avus	
Frater	
Avia	
Filius	
Filia	

## Casa Romana

Brief Description

Cubiculum	
Vestibulum	
Atrium	
Tablinum	
Peristylum	
Compluvium	
Impluvium	
Culina	
Triclinium	

## Urbs Romana

Latin

Description

Forum	
Taberna/Popina	
Curia	
Bibliotheca	
Insulae	
Castra	
Amphiteatrum	
Thermae/Balneum Publicum	

## Roman Clothing

Description

Tunica	
Stola	
Palla	
Toga	
Soleae/Calcei/Caligae	

## The Ancient World

Ancient Name

Modern Name

Hispania	
Graecia	
Africa	
Aegyptus	
Roma	
Mare Internum/Mare Nostrum	
Gallia	
Italia	
Germania	
Britannia	
Asia Minor	



## Cardinal Numbers

Latin

Arabic Number

Roman Numeral

Septem		
Duo, Duae, Duo		
Quinque		
Decem		
Tres		
Octo		
Unus, Una, Unum		
Quattuor		
Sex		
Novem		

## Pronouns

Latin

English

Ego	
Tu, Te	
Nos, Nobis	
Vos, Vobis	
Quis	
Quid	

## Gods and Goddesses

Greek Name

Roman Name

Athena	
Ares	
Dionysus	
Zeus	
Poseidon	
Hermes	
Demeter	
Artemis	
Apollo	
Hephaestus	
Hades	
Hestia	
Hera	
Persephone	
Aphrodite	

### Adverbs (Usually end in -e or -ter)

Latin

English

Bene	
Male	
Saepe	
Lente	
Quoque	
Diligenter	
Celeriter	
Numquam	
Semper	

### Interrogatives (Question Words)

Latin

English

Cur	
Quomodo	
Quando	
Quot/Quota/Quantus	
Ubi	

## Tempus

Latin

English

Hodie	
Cras	
Postridie	
Cotidie	
Heri	
Olim	

## Conjunctions

Latin

English

Et	
Sed	
Quod	
Aut	
Nec/Neque	
Dum	
Si	
Nam	

## Prepositions

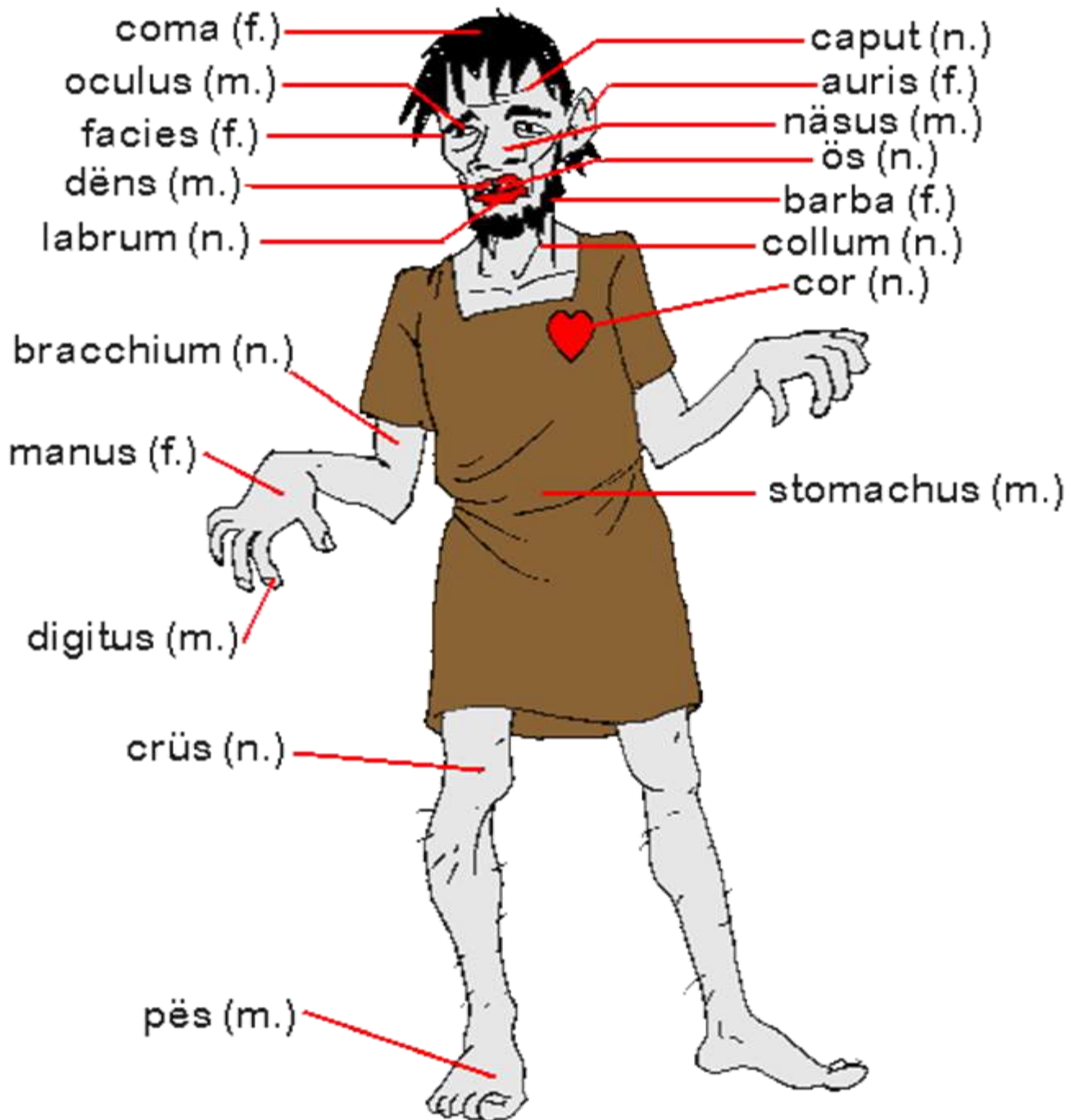
Latin

English

E/Ex	
A/Ab	
Ante	
Circum	
Sine	
Inter	
Trans	
Prope	
Extra	
Sub	
Post	
Cum	
Per	
De	
Ad	



## Identify the Body Parts



## Infinitives

An infinitive is a verb. It is **usually** the form of the verb that ends in the letters “-re-“. Infinitives are **always** translated with “to.”

**Example:** Ambulare – to walk

Bibere – to drink

Ire – to go

Latin

Ending

1 <sup>st</sup>	
2 <sup>nd</sup>	
3 <sup>rd</sup>	
3 <sup>rd</sup> - io	
4 <sup>th</sup>	
Irregular	esse, ire